

New England HOME

Celebrating Fine Design, Architecture, and Building

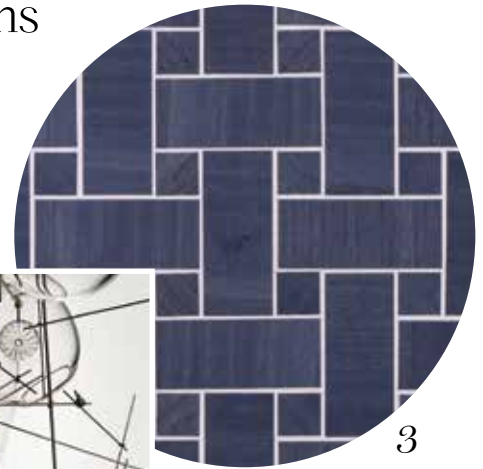
THE NEW MOOD:
COZY, CHIC &
COMFORTABLE

Trending

In the Showrooms



1



2

3



4



5

1. Stone Cold Stunning

British designer Ged Kennett collaborated with Indian designer and patron of the arts Shanane Davis on these hand-crafted semiprecious-stone pulls, made entirely from raw natural materials. | *Brassworks Fine Home Details, Providence, finehomedetails.com*

2. Paradise on Earth

Lindsey Adelman's newest lighting collection, Paradise City, was influenced by everyone from playwright W. Somerset Maugham and photographer Helmut Newton, to rocker Axl Rose and model Nadja Auermann | *Lindsey Adelman Studio, Boston, lindseyadelman.com*

3. Dream Weaver

One of the new lines of wallcoverings from Phillip Jeffries features woven wood inspired by tile work and marquetry. Seen here, the Navy Loom colorway | *Phillip Jeffries, Boston, phillipjeffries.com*

4. Tip the Scale

Scott Group Studio recently debuted a six-piece collection called Escala, Spanish for "to scale." The rugs, hand-tufted by artisans in the company's Michigan headquarters, can be customized according to size and color. | *Scott Group Studio, Boston, scottgroupstudio.com*

5. Sofa Sophisticate

Fashion designer Jason Wu and custom-furniture brand Interior Define have collaborated on a new sofa collection featuring exposed wood frames and more than sixty-five fabric and leather options. | *Interior Define, Boston, interiordefine.com*

6. Throw on Some Cozy

The Japan collection from de Le Cuona includes felted virgin-and-merino-wool throws reminiscent of old Japanese textiles. Available in rust/black, sky/black, and teal/black. | *Studio 534, Boston, s5boston.com*



6

| EDITED BY ERIKA AYN FINCH |

Trending

In the Showrooms



1

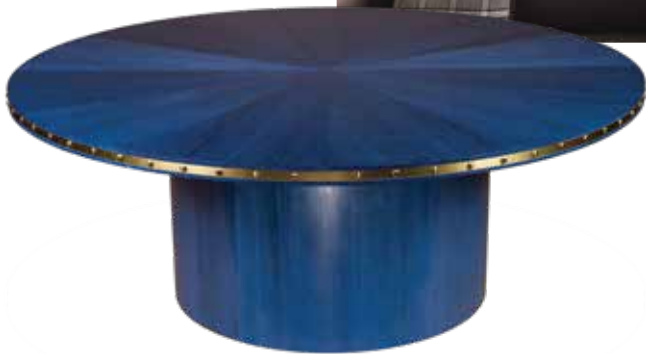
2



3



4



5

6



1. Pop Culture

Kim Seybert's Bottle Cap coasters are sure to spark conversation at your next party. Each retro-style coaster is handmade with glass beads. | *Neiman Marcus, Boston and Natick, Mass., neimanmarcus.com*

2. Kitchen Talk

Modulnova's Concealed Kitchens are full kitchens that are completely or partially hidden behind a facade that, when closed, looks like a modern piece of furniture. | *Studio Verticale, Boston, studioverticale.com*

3. Industrial Chic

Architect and interior designer Barry Goralnick has partnered with Currey & Company for a lighting collection that includes the Beaufort pendant, which was inspired by midcentury shapes and design. | *Ferguson, various New England locations, fergusonshowrooms.com*

4. Sweet Carolyn

Keith Fritz's new expanding tables include the 1970s-style Carolyn, seen here in Ceylon Primavera. The table sports metal inlay that bends along the edge. | *M-Geough, Boston, m-geough.com*

5. Silver Chic

The oval bench from Bernhardt Furniture Company's Calista collection boasts an upholstered box seat and plated stainless-steel base comprising of tubes of varying heights. | *Bernhardt Furniture Company, various New England locations, bernhardt.com*

6. Falling for Fish

Kravet Couture's Modern Luxe Izu collection showcases ancient Japanese art and traditional dyeing techniques. Lotus Pond includes figurative embroidery depicting a koi pond. | *Kravet, Boston, kravet.com*